



PRECISION IN EVERY

CONNECTION



SIMMONDS  
MARSHALL  
LIMITED

[simmondsmarshall.com](http://simmondsmarshall.com)



## SIMMONDS MARSHALL LIMITED

Established in 1960 as a Private Limited Company in collaboration with Firth Cleveland Fastenings Ltd., U.K., SIMMONDS MARSHALL LIMITED transitioned into a public entity in 1986. The company specializes in manufacturing a wide range of fasteners, serving Automotive Industry OEMs directly and exporting to renowned brands worldwide from a 120,000 square feet factory.

### MANUFACTURING CAPABILITIES

- Augmented cold-forming capacity enables production of over 500 million nuts and bolts annually.
- Capable of delivering nuts and bolts in sizes ranging from M3 to M70 diameter and equivalent imperial sizes, conforming to various standards and finishes.

### SKILLED WORKFORCE AND INNOVATION

- Highly skilled workforce ensures seamless execution and exceptional quality across design, production, and service delivery.
- Culture of continuous learning fosters innovation, prioritizing customer satisfaction, and reflects in CSR initiatives for sustainable community development.

### Quality Certifications and Standards

- Holds quality certifications in IATF 16949, ISO 14001, and ISO 45001, along with BIS certification for standard fasteners, ensuring adherence to stringent quality standards.

### INDUSTRY IMPACT

- Precision-crafted fasteners set global automotive industry standards, enhancing performance and safety, with a commitment to minimizing environmental impact.

### CLIENTELE

- Serving Automotive and Industrial sectors, catering to major Automobile Manufacturers in India as OE Suppliers, including Honda, Suzuki, Leyland, VECV, Royal Enfield, Cummins, JCB, JLR, and TAFE.



Actual view of the Factory located in Chakan, Pune, Maharashtra, India.

## VISION

To become the global leader in specialized fastener manufacturing, setting the benchmark for quality, reliability, and innovation in the industry.

## COMMITMENT TO EXCELLENCE

Spread across meticulously maintained grounds spanning over 10 acres and housed within a sprawling factory spanning 120,000 square feet, our unwavering commitment to excellence is palpable in every facet of our operations.



*Our journey at SIMMONDS MARSHALL LIMITED extends far beyond the mere manufacturing of fasteners; it embodies the essence of forging connections, building trust, and driving innovation. With each product we deliver, we steadfastly uphold our commitment to establishing new benchmarks of excellence and fostering a positive impact on the world.*

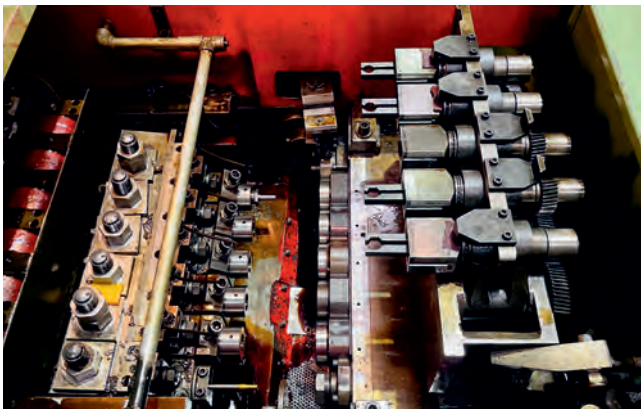
**- Mr. Shiamak Jeejeebhoy Marshall**

## MISSION

Our mission is to deliver superior specialized fasteners to our customers, addressing their unique requirements with precision-engineered solutions. We are dedicated to continuous improvement, sustainability, and customer satisfaction while nurturing a culture of innovation and excellence within our organization.

# Driving Innovation and Excellence

---



## Nut Forging

---

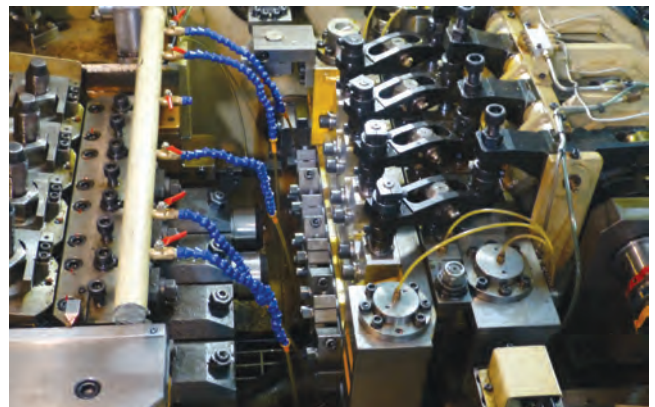
Our advanced forging facility utilizes cutting-edge technology to shape raw materials into high-quality nuts, ensuring durability and reliability in every product.





## Bolt Forging

With precision machinery and skilled craftsmanship, we specialize in forming bolts of various sizes and specifications, meeting the diverse needs of our customers with excellence.



## SECONDARY OPERATIONS

Our dedicated team performs meticulous post-production and secondary operations to ensure the final products meet stringent quality standards, guaranteeing customer satisfaction.



## HEAT TREATMENT PLANT

Our state-of-the-art heat treatment plant employs advanced techniques to enhance the strength and durability of our fasteners, ensuring optimal performance in demanding applications.



## AUTOMATIC PLATING

Through automated plating processes, we provide high-quality surface finishes to our fasteners, enhancing their corrosion resistance and aesthetic appeal.



## WIP STORAGE

Our well-organized WIP storage areas ensure seamless workflow and efficient production processes, allowing us to meet customer demands with agility and precision.



## FINISHED GOODS STORES WITH KANBAN RACKS

Our multi-store finished goods stores are strategically designed to accommodate a wide range of fasteners, facilitating streamlined inventory management and timely order fulfillment.



## TOOL ROOM

Equipped with advanced machinery and tools, our tool room supports continuous innovation and improvement, enabling us to stay ahead of industry trends and customer requirements.



## RAW MATERIAL STOCK

Our meticulously managed raw material stock ensures a steady supply of high-quality materials, enabling us to maintain uninterrupted production and meet customer demands effectively.



## SOLAR PANELS

Our factory's 1 MW solar generation capacity demonstrates our commitment to sustainable energy, reducing carbon emissions with renewable energy, and showcasing our environmental stewardship.





# Quality Control Measures



At SIMMONDS MARSHALL LIMITED, quality control is a cornerstone of our operations. We employ advanced technology and rigorous processes to ensure that every product meets the highest standards of quality and reliability.

Our fully equipped laboratory features advanced facilities including a Spectroscope, Metallurgical Microscope, Co-efficient of Friction Testing, Tensile / Proof Load Testing, Prevailing Torque Testing, XRF and Coating Thickness Analysis, Contour Testing, Micro & Vickers Hardness Testing, Salt Spray Chamber, Profile Projector, Thread Gauge Calibration, and a range of general testing instruments.

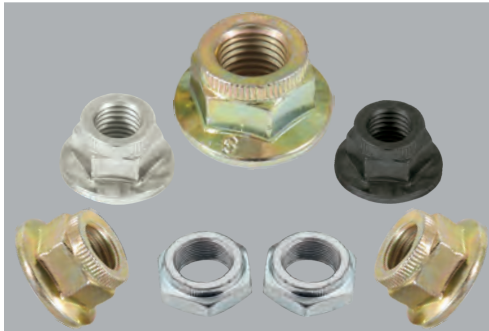
**Computerized Optical Sorting:** We utilize state-of-the-art computerized optical sorting technology to detect and eliminate defects in our products. This ensures that only products of the highest quality reach our customers.

**Barcoded Work-in-Progress (WIP) Storage:** We utilize barcoded WIP storage sections to track and monitor partially finished goods throughout the production process. This enables us to maintain traceability and accountability at every stage of production.

With our comprehensive quality control measures and commitment to excellence, you can trust SIMMONDS MARSHALL LIMITED to deliver products of the highest quality and reliability.



Computerized Optical Sorting



## CLEVELOC NUTS

The Cleveloc nut is celebrated for its cost-effective, one-piece design, renowned for exceptional locking and reusability features. At its core lies a locking collar, forming a geometric ellipse housing two uniformly shaped locking elements. This innovative design ensures flawless engagement of bolt threads during assembly, averting interruptions or pitch errors that could lead to galling. Utilizing the collar portion and threads efficiently, the locking elements evenly distribute pressure, contributing to a high fatigue life and offering flexibility for consistent performance. As tightening progresses, escalating pressure and friction on the bolt threads further enhance the nut's self-locking action, facilitating smooth and progressive engagement.

### PRODUCT RANGE

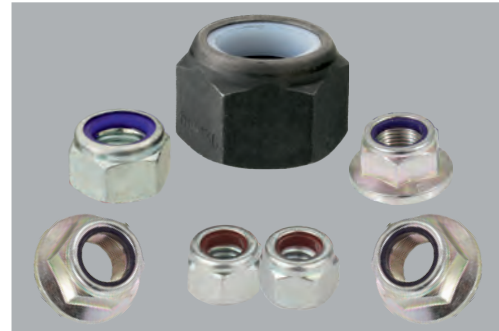
**Specification :** DIN 980, DIN 6925, DIN 6927 & Customer Specifications

**Size Range :** M5 to M33 and equivalent Inch Dimensions

**Surface Finishes :** Bright Zinc, Zinc Blue, Zinc Yellow, Zinc Black, Zinc Green. Hexavalent or Trivalent chrome.

#### Characteristics :

All Metal Lock Nut | Superior Locking |  
High Re-usability | Uniform Performance |  
High Temperature Application (250° C)



## NYLOC NUTS

Nyloc nuts feature a specially molded Nylon Insert, with a predetermined internal diameter slightly smaller than the bolt major diameter. As the bolt is tightened, it presses into the Nylon insert, causing it to yield and form a thread. The resistance from the nylon insert creates friction between the nut and bolt threads, ensuring a secure fit. The Nyloc nut achieves effective locking and vibration-proofing through two independent forces:

- The friction is generated by the close contact between the threads due to the encircling "Wedge" effect of the Nylon insert.
- The high compression of the Nylon insert, which tightly grips the bolt threads, provides sustained inward pressure.

### PRODUCT RANGE

**Specification :** DIN 982, DIN 985, DIN 6924, DIN 6926, BS 1083, BS 1768 & Customer Specifications

**Size Range :** M4 to M48 (Metric Series) and equivalent Inch dimensions

**Surface Finishes :** Zinc Plating, Zinc Nickel, Zinc Iron, Zinc Flake Coating

#### Characteristics :

Single Unit Assembly | Infinite Exact Adjustment |  
Interchangeable | Predictable | Tightening  
Torques | Anti-corrosion | Vibration Proof |  
Re-usable | Undamaged Bolt Threads |  
Even Torque Scatter | Leakproof Seal |  
Easy Identification





## U-NUTS

These self-locking nuts incorporate metal inserts, typically crafted from durable materials like carbon steel or stainless steel. These inserts are strategically placed along the thread of the mating component, ensuring a secure and reliable self-locking mechanism. This design feature enhances the stability and longevity of the assembly, providing added assurance against loosening or disengagement over time.

### PRODUCT RANGE

**Specification :** Customer Specifications and as per DIN980M

**Size Range :** M5 to M22 (Metric Series)

**Surface Finishes :** Zinc Plating, Zinc Nickel, Zinc Iron, Zinc Flake Coating

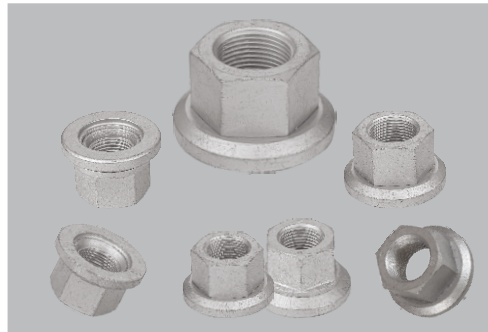
**Characteristics :**

Locking Element (Friction Ring) - Special

Stainless Steel Ring | Superior Locking |

High Re-usability | Uniform Performance |

Being All Metal Product, the Nuts are Highly Resistant to Heat and Cold (-70° C to +250° C)



## WHEEL NUTS

We specialize in manufacturing a wide range of wheel nuts including Spherical Collar Nuts, Conical Nuts, Flange Wheel Nuts, Assembly Wheel Nuts, and Specials tailored to customer prints. These nuts are meticulously crafted to cater to heavy and light commercial vehicles, cars, tractors, and two-wheelers, adhering strictly to specifications provided by vehicle manufacturers. Designed for securely fastening wheels, our products bear approvals not only from vehicle manufacturers but also from the Automotive Research Association of India (ARAI).

### PRODUCT RANGE

**Specification :** As per DIN74361(2 & 3) and Customer Specifications

**Size Range :** M10 to M24

**Surface Finishes :** Zinc Plating, Zinc Nickel, Zinc Iron, Zinc Flake Coating, Phosphating





## DOME CAP NUTS

Dome cap nuts are indispensable for protecting bolt ends and preventing damage to protruding bolt threads.

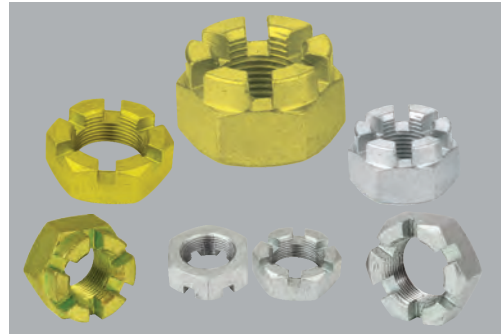
We offer both one-piece designs, Plain Hexagon Cap and Flanged designs. Additionally, we provide separate metal cap nuts with or without locking features to suit diverse needs.

### PRODUCT RANGE

**Specification :** DIN 1587 & Customer Specifications

**Size Range :** M6 to M25

**Surface Finishes :** Zinc Plating, Zinc Nickel, Zinc Iron, Zinc Flake Coating



## CASTLE & SLOTTED NUTS

Castle and slotted nuts are engineered to provide an additional level of security, particularly in applications prone to vibration and potential loosening.

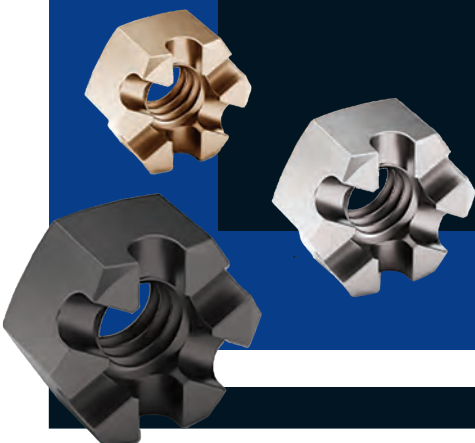
These nuts are secured using a cotter pin inserted through the nut slots and into a predetermined hole in the mating bolt, ensuring enhanced stability and reliability.

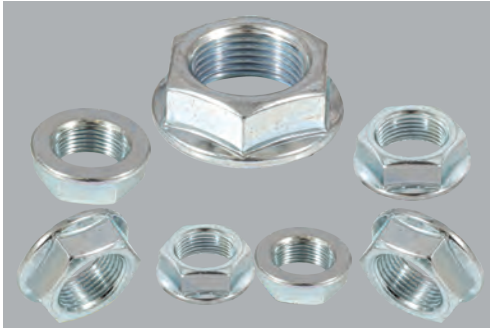
### PRODUCT RANGE

**Specification :** As per DIN 935/937 and Customer Specifications

**Size Range :** M12 To M48 and equivalent Inch dimensions

**Surface Finishes :** Zinc Plating, Zinc Nickel, Zinc Iron, Zinc Flake Coating, Phosphating





## FLANGE NUTS – PLAIN & SERRATED

Serrated nuts provide enhanced security by eliminating the need for washers, thanks to their ample bearing surface.

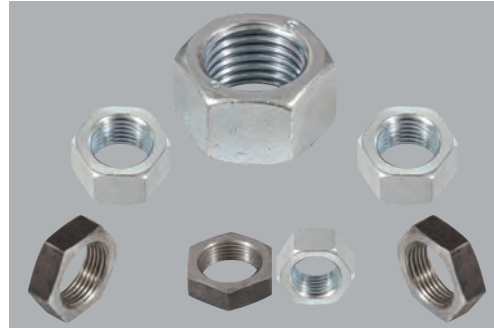
This feature ensures a robust grip, reducing the risk of loosening. Additionally, their serrations offer additional resistance against vibration-induced loosening, enhancing overall reliability in various applications.

### PRODUCT RANGE

**Specification :** DIN 6923 / Customer Specifications

**Size Range :** M6 to M24 and equivalent Inch dimensions

**Surface Finishes :** Zinc Plating, Zinc Nickel, Zinc Iron, Zinc Flake Coating



## HEXAGON NUTS

Our range of Plain Hexagon Nuts caters to diverse applications, ensuring reliable fastening solutions across industries. Trusted for their strength and durability, our hexagon nuts offer secure connections and optimal performance worldwide.

Built to provide reliable fastening solutions in any setting, they are trusted by professionals globally.

### PRODUCT RANGE

**Specification :** DIN /ISO and Customer Specifications

**Size Range :** M4 to M48 and equivalent Inch dimensions

**Surface Finishes :** Zinc Plating, Zinc Nickel, Zinc Iron, Zinc Flake Coating





## WELD NUTS

Weld nuts are welded directly onto sheet metal parts for assembly, enabling blind assembly and component integration.

They are ideal for high-speed production methods using automatic welding machines, streamlining manufacturing processes efficiently.

### PRODUCT RANGE

#### SQUARE

**Specification :** DIN928, JIS

**Size Range :** M 5 to M 12

**Surface Treatment:** Self or Zinc Plated

#### HEXAGON

**Specification :** DIN 929

**Size Range :** M 5 to M 12

**Surface Treatment:** Self or Zinc Plated



## PHILLIDAS INDUSTRIAL SELF LOCKING NUTS

The specially designed self-locking nuts feature predetermined slots, offering versatile, reliable, and consistent locking features. The Phillidas Industrial nut is an all-metal, one-piece nut with a collar above the hexagon, featuring two slots cut on the same plane and de-pitched threads.

When the nut is tightened on a bolt, the thread is gripped on the flank, the point where it is designed to take the thrust. These nuts are suitable for both low and high-temperature conditions.

### PRODUCT RANGE

**Specification :** As per Phillidas Catalogue, DIN980 and to customer prints.

**Size Range :** M3 to M42 and equivalent Inch dimensions

**Surface Finishes :** Zinc Plating, Zinc Nickel, Zinc Iron, Zinc Flake Coating





## PHILLIDAS TURRET SELF LOCKING NUTS

The specially designed self-locking nuts with predetermined slots offer versatile, reliable, and consistent locking features. The Phillidas Turret is an all-metal, one-piece nut with a collar above the hexagon, featuring two slots cut one over the other and de-pitched threads. When the nut is tightened on a bolt, the thread is gripped on the flank, the point at which it is designed to take the thrust.

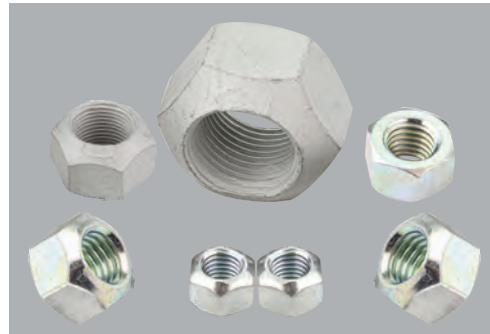
These nuts are suitable for both low and high-temperature conditions. Special features of Turret Nuts include lower prevailing torque than the Industrial design and higher reusability.

### PRODUCT RANGE

**Specification :** As per Phillidas Catalogue, DIN980 and to customer prints

**Size Range :** M3 to M42 and equivalent Inch dimensions

**Surface Finishes :** Zinc Plating, Zinc Nickel, Zinc Iron, Zinc Flake Coating



## PHILLIDAS 'MARK V' SELF LOCKING NUTS

Philidas 'Mark V' self-locking nuts are a proven, economical method of ensuring reliable assembly under extreme stress and vibration. The integral collar above the hexagon is accurately deformed in two opposite places to effect both radial and axial depitching of the top threads.

This design provides flexibility within the locking element. During assembly, the bolt threads are fully gripped by the axial depitching of the nut threads, while the radial deflection effectively controls the application torque.

### PRODUCT RANGE

**Specification :** DIN 980 / Customer Specifications

**Size Range :** M4 to M36 and equivalent Inch Dimensions

**Surface Finishes :** Zinc Plating, Zinc Nickel, Zinc Iron, Zinc Flake Coating





## COLD FORGED COMPONENTS – SLEEVES, COLLAR BUSH, SPACERS

Utilizing our new 6-station PKO Cold Formers, we have developed symmetrical components in round, square, and hexagon shapes, with or without collars (flanges) and threads.

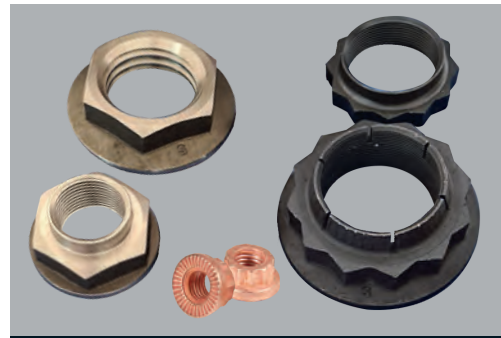
This cold forging process ensures close tolerances and high productivity, meeting OE manufacturers' demands while providing significant cost savings.

### PRODUCT RANGE

**Specification :** As per customer Designs

**Size Range :** Diameter 5mm to 34mm , Collar Dia: 42mm max, Length: 6mm – 40mm

**Surface Finishes :** Zinc Plating, Zinc Nickel, Zinc Iron, Zinc Flake Coating



## CUSTOMIZATION

At SIMMONDS MARSHALL LIMITED, we recognize that each client has unique needs and requirements. That's why we offer customization services tailored to your specifications. Whether you require specialized fasteners or other components, our team is committed to delivering solutions that meet your exact needs.

### Advantages of our customization services include:

**Tailored Solutions:** Our customization services enable us to create products specifically designed for your applications, ensuring optimal performance and functionality.

**Cost-Effectiveness:** By customizing products to your requirements, we can eliminate unnecessary features and reduce costs while maintaining quality and reliability.

**Enhanced Performance:** Customized products are engineered to deliver superior performance, helping you achieve your goals more efficiently and effectively.

**Flexibility:** We collaborate closely with you throughout the customization process to ensure that the final product meets your expectations and specifications.



## BOLTS & STUDS

We specialize in manufacturing a diverse range of bolts and studs to meet various industrial needs. Our forged fasteners undergo meticulous secondary operations, including turning, grooving, slotting, knurling, milling, chamfering, drilling, and pointing, ensuring precision and reliability in every product. With the widest range available, we also offer customized solutions to meet specific customer requirements.

Our state-of-the-art manufacturing processes and stringent quality control measures ensure that every fastener meets the highest standards of performance and durability.



## KNURLED WHEEL BOLTS

The most reliable cold forged and cold rolled high tensile wheel bolts.

### PRODUCT RANGE

**Specification :** ISO coarse & fine, UNC, UNF

**Size Range :** M5 to M24 and equivalent

**Surface Finishes :** Trivalent, Phosphated, Zinc-Aluminium flake coated (Magni, Geomet, Dacro)



## STANDARD BOLTS / SCREWS

The most reliable cold forged and cold rolled high tensile Standard bolts and Screws.

### PRODUCT RANGE

**Standards:** DIN / ISO / IS / JIS / ASTM

**Specification :** ISO coarse & fine, UNC, UNF

**Size Range :** M5 to M24 and equivalent

**Surface Finishes :** Zn Trivalent, Zn Ni, Phosphated, Zinc-Aluminium flake coated (Magni, Geomet, Dacro)



## SPECIAL COMPONENTS

The most reliable cold forged and machines components, shafts, etc...

### PRODUCT RANGE

**Specification :** Cold extruded shaft, Axles, etc...

**Size Range :** Shank diameter 24 mm

**Surface Finishes :** Zn Trivalent, Zn Ni, Phosphated, Zinc-Aluminium flake coated (Magni, Geomet, Dacro)

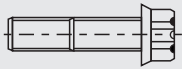
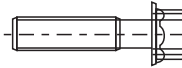
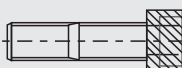
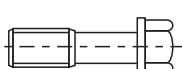


# BOLTS & STUDS

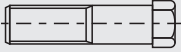
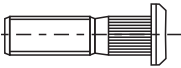
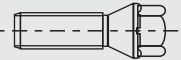
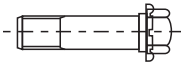
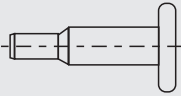
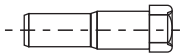
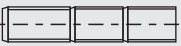
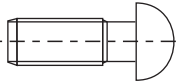
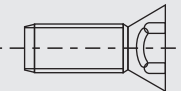
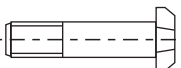
## PRODUCT RANGE

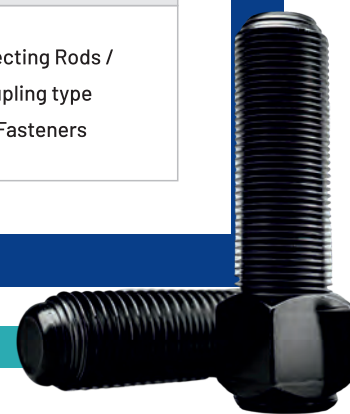
Description	Diameter	Length	Standards	Grade	Forging	Finish
Hex Bolt / Sc	M4 - M48	12mm to 300mm	DIN, IS, BS, ISO, ASME	4.6, 6.8, 8.8, 10.9, 12.9	Cold / Hot	Zn, Zn Flake, Phos
Flange Bolt / Sc	M4 - M24	12mm to 300mm	DIN, IS, BS, ISO, ASME	4.6, 6.8, 8.8, 10.9, 12.9	Cold / Hot	Zn, Zn Flake, Phos
Socket Countersunk Head Screw	M4 - M48	10mm to 300mm	DIN, IS, BS, ISO, ASME	4.6, 6.8, 8.8, 10.9, 12.9	Cold / Hot	Zn, Phos
Socket Head Cap Screw	M4 - M48	15mm to 75mm	DIN, IS, BS, ISO, ASME	8.8, 10.9, 12.9	Cold / Hot	Zn, Blk, Phos
Studs	M5 - M30	50mm to 200mm	ASTM A193	B7	Cold / Hot	Zn, Blk

## PRODUCT RANGE

Sr No.	FASTENER TYPE	Description	Class/Grade	Process/Material	Application
1		Bi-Hex Bolts Screws	12.9	Black Phosphate Heat Treated Alloy Steel	Engine Applications
2		Hex Flange Bolts Screws	8.8 10.9	Carbon / Alloy Steel	Engine frames, Body frames
3		Socket Head Cap Bolt Screws	12.9	Alloy Steel, Heat Treated	Machine tools, Test equipment Automotive assemblies
4		Hex collar Bolt Screws	8.8 10.9	Carbon / Alloy Steel Heat Treated	Chassis / Body Applications



5		Hex Head Bolt Screw	8.8 10.9	Carbon / Alloy Steel Heat Treated	General purpose Fasteners
6		Hub Bolts	10.9 12.9	Black Phosphate Heat Treated Alloy Steel	Heavy trucks/buses High load carrying capacities
7		Wheel Bolts	10.9 12.9	Heat Treated Alloy Steel	Light commercial Vehicles & Passenger Cars
8		Cylinder Head Bolt Main Bearing Cap Bolts	10.9 12.9	Heat Treatment Copy Turning / Grinding	Automobile, Engine Applications
9		Round Head Bolts	6.8 8.8	Carbon / Alloy Steel, Zn Plated	Automobiles
10		Indent Head Hex formed Screws	8.8 10.9 12.9	Black Phosphate Heat Treated Carbon/ Alloy Steel	Automobiles
11		Double Ended Studs	8.8 10.9	Carbon / Alloy Steel	General Purpose
12		Socket Button Head Screws	12.9	Alloy Steel	Electrical Control Panels, Frame Works etc.
13		Socket Counter Sunk Head Screws	12.9	Alloy Steel	Machine sliding parts mainly like liners, beds etc.
14		D' Head Bolts	8.8 10.9	Carbon/ Alloy Steel	Connecting Rods / Coupling type of Fasteners





### **Simmonds Marshall Limited**

#### **Administration & Sales Office**

Apeejay Chambers 5,  
Wallace Street,

Fort, Mumbai – 400 001, India.

Tel. : (91-22) 6633-7425 / 6 / 7

E-mail : [sales@simmondsmarshall.com](mailto:sales@simmondsmarshall.com)

#### **Registered Office**

Plot No. C-4/1, Phase II, Chakan,  
MIDC, Bhamboli, Khed,

Pune 410501, Maharashtra, India.

Tel. : (91-02135) 683939 / 683900

E-mail : [sales@simmondsmarshall.com](mailto:sales@simmondsmarshall.com)

[simmondsmarshall.com](http://simmondsmarshall.com)



**SIMMONDS  
MARSHALL  
LIMITED**